
THIS DOCUMENT COULD CONTAIN TECHNICAL DATA, THE EXPORT OF WHICH IS RESTRICTED BY THE U.S. ARMS EXPORT CONTROL ACT (AECA) (TITLE 22, U.S.C. SEC 2751, ET SEQ.) OR THE EXPORT ADMINISTRATION ACT OF 1979, AS AMENDED (TITLE 50, U.S.C., APP. 2401, ET SEQ.). TECHNICAL DATA AUTHORIZED FOR EXPORT MAY NOT BE REEXPORTED, TRANSFERRED, OR DIVERTED FROM THE COUNTRY OF ULTIMATE END-USE OR FROM THE AUTHORIZED FOREIGN END-USER OR DISCLOSED TO A NATIONAL OF ANOTHER COUNTRY WITHOUT THE PRIOR WRITTEN APPROVAL OF THE OFFICE OF DEFENSE TRADE CONTROLS. TECHNICAL DATA CONTAINED IN THIS DOCUMENT HAS BEEN AUTHORIZED FOR EXPORT FROM THE UNITED STATES TO FOUR-EYES ALLIED PARTNERS, NATIONALS OF AUSTRALIA, CANADA, AND THE UNITED KINGDOM BY THE OFFICE OF DEFENSE TRADE CONTROLS, IN SO FAR AS INDIVIDUAL NATIONALITY IS NOT DIVERSE FROM HIS OR HER EMPLOYING AGENCY.

GROUND SITUATION KALOCHISTAN



OVERVIEW

- OPSKED
- Commanders Guidance
- Range Orientation
 - Main Supply Routes (MSR's) and Starting Points (SPs)
 - Towns
- Order Of Battle (OB) Baseline
 - Main Anti-Coalition Factions
 - High Value Targets
 - Latest Intelligence

EMPIRE CHALLENGE EC08

Daily Operations Schedule (OPSKED)

- 0720 – White Cell Command & Control VTC
- 0730 – Start Point (SP) – Units arrive ECR/ Crypto Pickup / Weapons Draw

- 0745 – Net Call

- 0800 – Range Active

- 0900 – Commanders Update

- 1000 –

- 1100 –

EXECUTION CHECKLIST

- 1200 – White Cell Update Brief

- 1300 –

- 1400 – Joint Collection / Exploitation Board (JCXB)

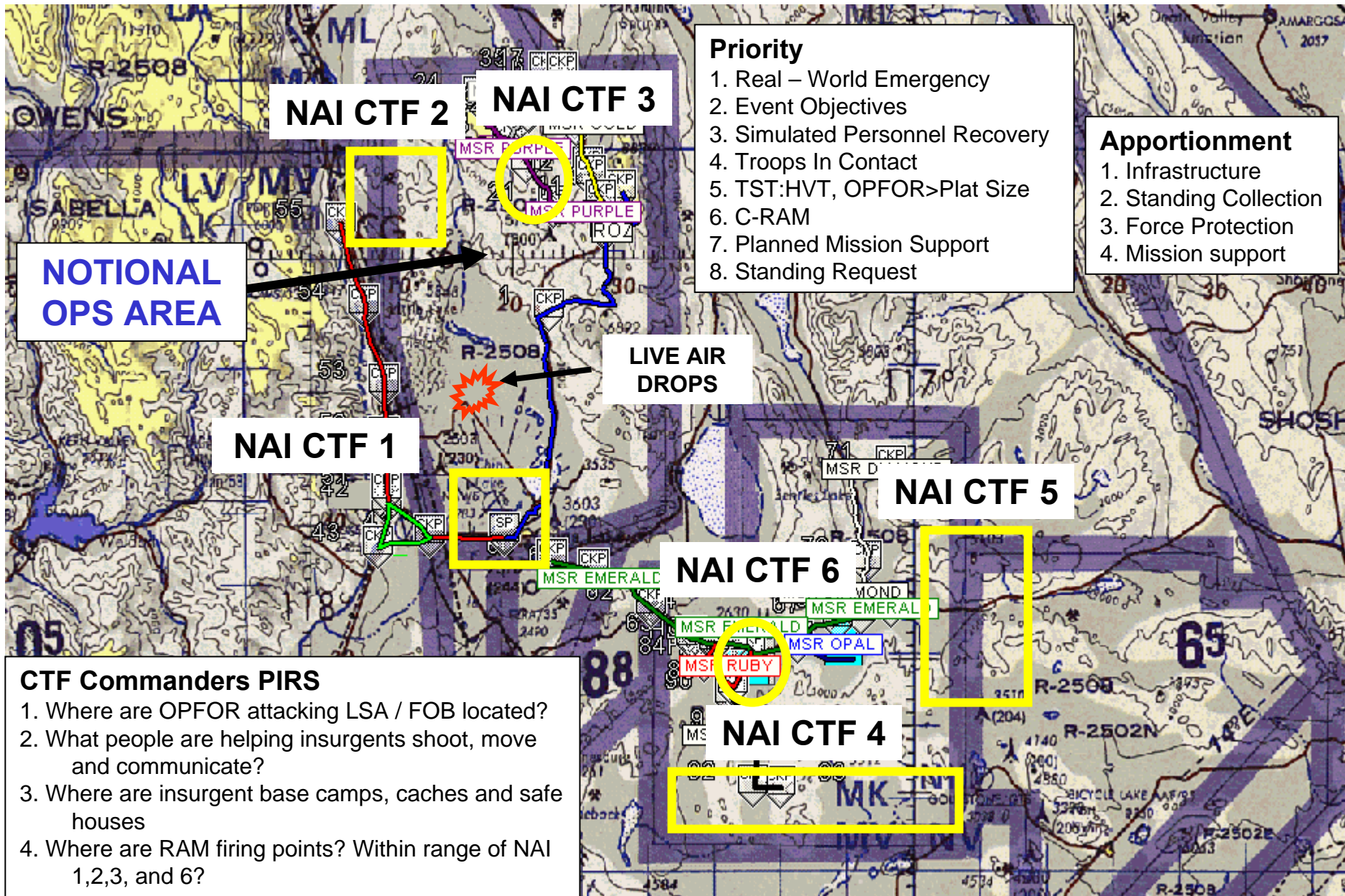
- 1500 –

- 1600 – Change of Mission (CM) / Range Closed

- 1630 – Refit / Refuel / Vehicles, Equipment & Weapons secured / Return Crypto

- 1715 – Key Leader – Hot Wash / OPORD Update FRAGO Brief / RSTA & PTO Released

CTF 781 COMMANDERS JCMB GUIDANCE



LSA
Warrior

FOB
SHILOH
(Mike Labs)

UNCLASSIFIED

X
Lancer 6

COP
Denver

X
Victory 6

COP
Tampa

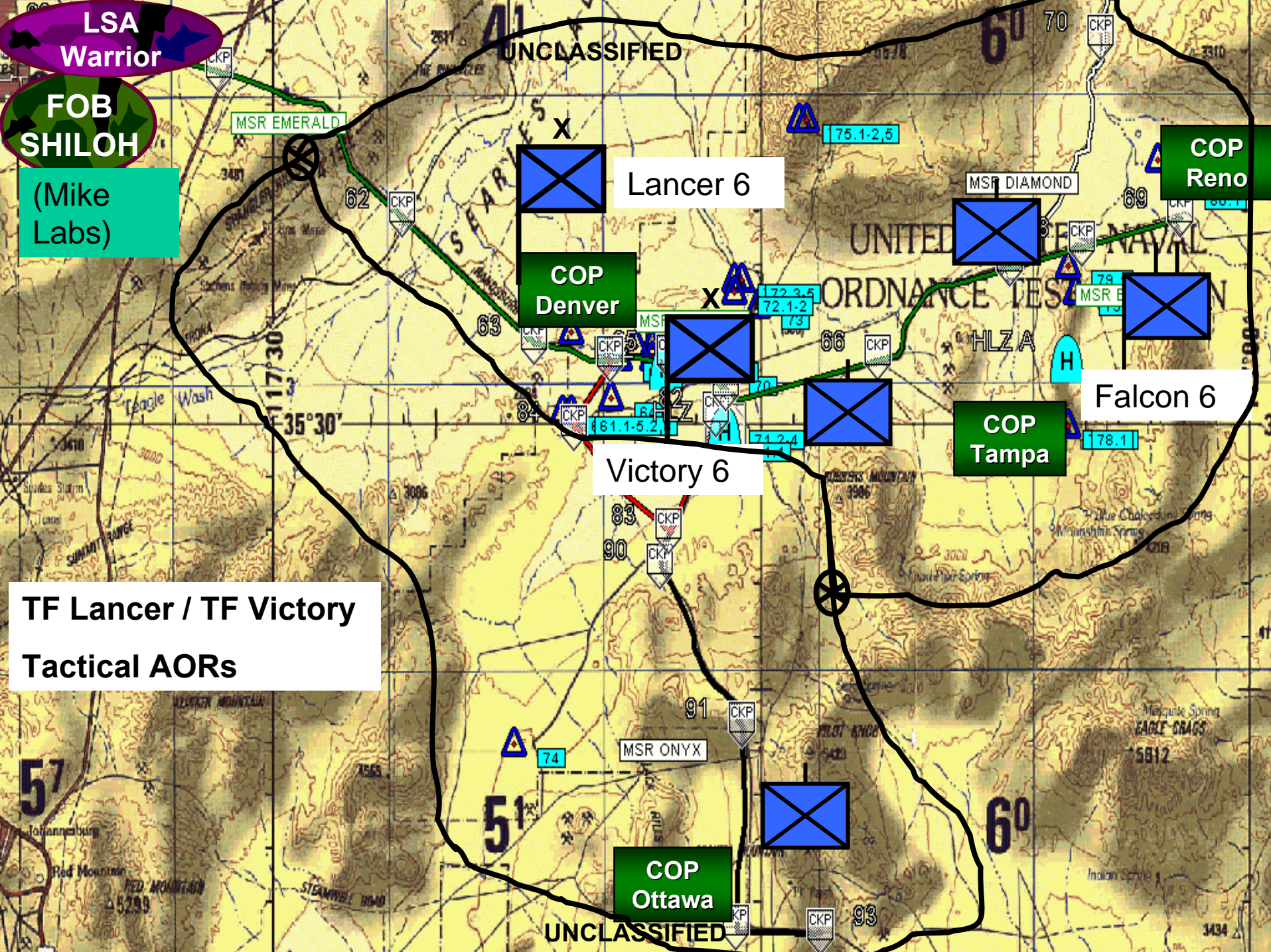
Falcon 6

COP
Reno

TF Lancer / TF Victory
Tactical AORs

COP
Ottawa

UNCLASSIFIED



TF Lancer (SBCT) CCIR:PIR/SIR

Priority Intelligence Requirement (PIR)

- PIR 1: WHAT IS THE CURRENT DISPOSITION OF AKF ELEMENTS OPERATING WITHIN THE AOR?
 - SIR 1A: WHERE ARE THE AKF KEY LEADERSHIP AND FACILITATORS WITHIN AO?
 - SIR 2A: WHERE WILL AKF CONDUCT COORDINATED AND COMPLEX ATTACKS WITHIN AO?
- PIR 2 WHAT IS THE STATUS OF CRITICAL FACILITIES AND SERVICES NECESSARY TO ACCOMPLISHING THE TF LANCER SBCT OBJECTIVES?
 - SIR 2A WHAT IS THE REACTION OF AKF TO TF LANCER SBCT OPERATIONS WITHIN AO?
- PIR 3: HOW WILL NEIGHBORING COUNTRIES ATTEMPT TO INFLUENCE THE SITUATION WITHIN THE AO?
 - SIR 3A: WHERE ARE AKF HIDING FOREIGN FIGHTERS, INFILTRATORS AND MOVING RESOURCES?
 - SIR 3B: HOW SUPPORTIVE IS THE LOCAL POPULATION OF AKF WITHIN AO?

EXERCISE

EXERCISE

PRIORITY INTELLIGENCE REQUIREMENTS: (PIRs):

UNITS ARE ENCOURAGED TO REPORT ALL SUSPICIOUS ACTIVITIES ALONG ACTIVE MSR'S.

A. REPORT ALL ENEMY ENGAGEMENTS, WHETHER OR NOT AN EXCHANGE OF FIRE OCCURRED.

B. ALL SUSPECTED IED'S LOCATIONS

C. WEAPON CACHE LOCATION

D. REPORT ALL POTENTIAL ROAD HAZARDS OR OBSTACLES THAT MAY IMPEDE FUTURE MISSIONS.

CTF 781 Task Organization

CFLCC

TF Lancer (US BCT)

5-199 IN

WOLFPACK (Attached)

FIST (Attached)

JTAC (Attached)

1 x Sensor Web Tm (Attached)

1 x Mobile Defender (OPCON)

1 x Golden Eye (OPCON)

1 x Viking (OPCON)

1 x Scan Eagle (OPCON)

2-177 CAV(-)

2-55 FA (DS)(-)

Truck Co 677 Corps Spt Bn (OPCON)

TF Victory (CAN BG)

1 x Coyote (CAN) (Attached)

1 x TSK (CAN) (Attached)

1 x Mini-UAV (CAN) (DS)

1 x MEWT (CAN) (DS)

CFMCC

MOC ?

P-3? (BAMS; LS/RS; EP3)

TF Spear (CSOTF)

2SFG(A)

JSOAC

FOB 25 (5-2 SFG(A)(-))

1/A/2-55 FA (DS)

AOB 251

B/5-2 SFG(A)

2/A/2-55 FA (DS)

JTAC (Attached)

Raven (Attached)

CFACC

CAOC-Langley AFB

JSTARS

Sentinel ASTOR

Light Hawk

Scan Eagle

F/A-18 SHARPS/ATARS Paul Revere

Tigershark/Viking

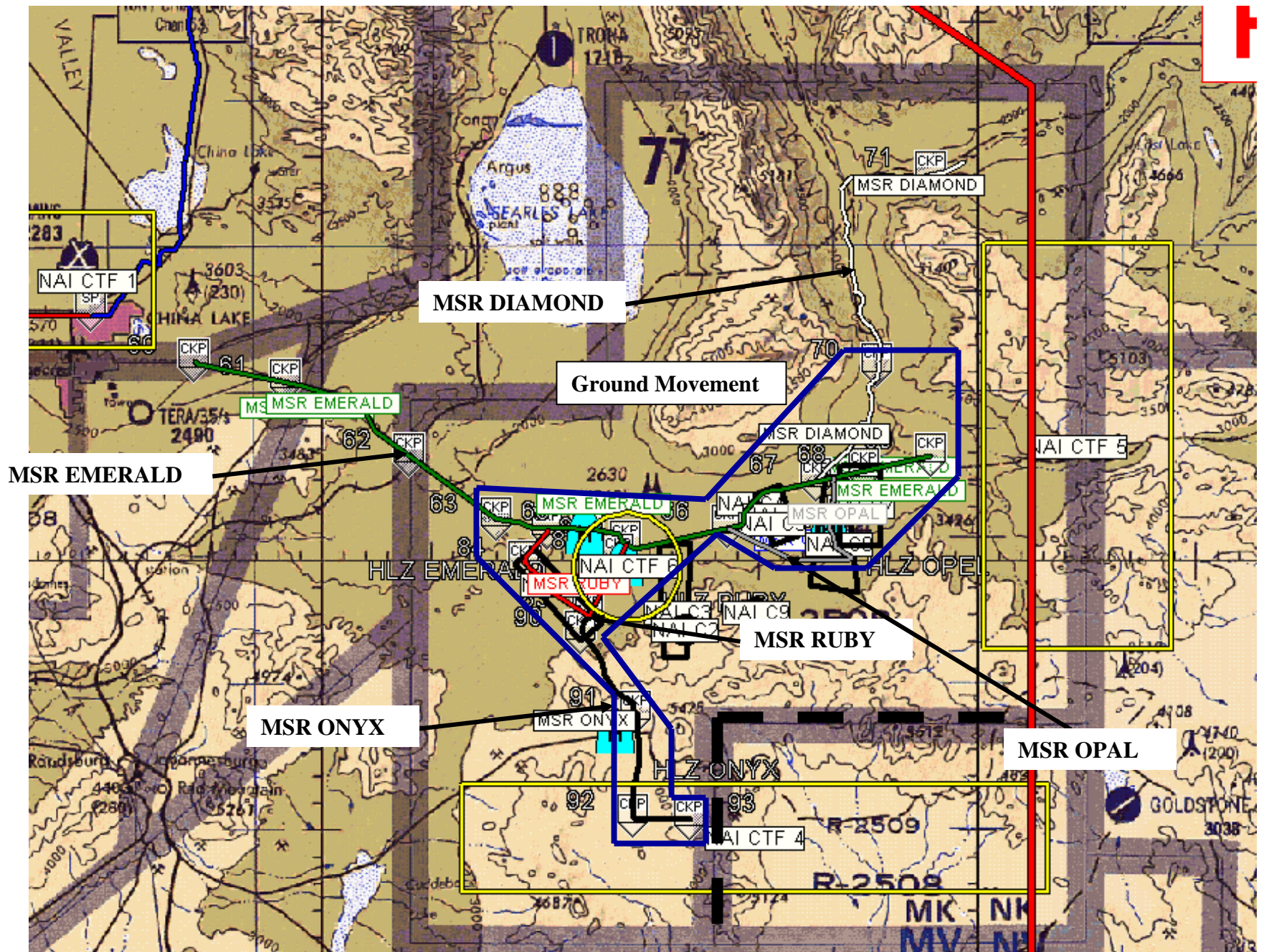
Reaper MQ9

GH RQ-4

Golden Eye

U2

ECHO RANGE MAIN SUPPLY ROUTE'S (MSR'S) AND CHECKPOINT'S



ECR VILLAGES



Town Assessment Metrics


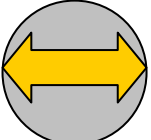

CDR Assessment		
Infrastructure		Threat
S	M	AIF/IN
W	S	ET
E	F	CR
A	G	S/E
T		

INFRASTRUCTURE	
S - Sewage	M - Medical
W - Water	S - Security
E - Electricity	F - Fuel
A - Academic	G - Governance
T - Trash	
THREAT	
AIF/IN - Insurgency	
ET - Ethnic Tension	
CR - Crime	
S/E - Subversion / ESP	

Good / Low
Neutral / Med. Risk
Poor / High Risk

Total Population
Shiite% / Sunni % / Kurd %

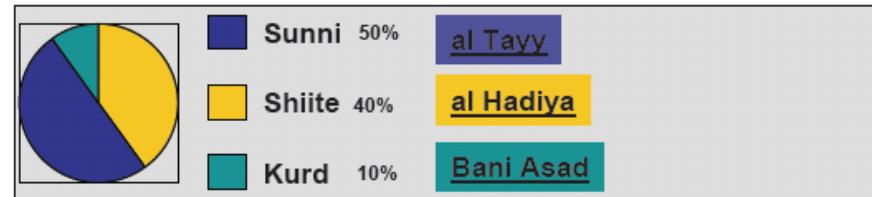
Local Commander's Professional Assessment of
SUPPORTIVE, NEUTRAL or HOSTILE

		
IMPROVING	STABLE	WORSENING

For EC08 Exercise Use Only

Infrastructure	Threat
S M	AIF/IN
W S	ET
E F	CR
A G	S/E
T	

STABLE
8000
90% Arab / 10 % Kurd

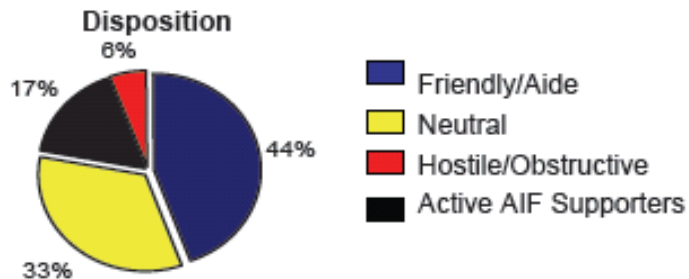


SWEAT Analysis

Water/Food–Requires importation of food from Kirkuk

Electricity–Some shortages and power outages

Ethnic Tension–Tensions occur between ethnic and religious factions occur



IRM

EMG

SCOR

- 25x pax
- 2-3 cells
- Transcend ethnic lines
- Single U/I leadership
- 1x 82mm mortar
- Can recruit for martyrdom ops
- 20-25x AK47
- 3-5x RPK/PKM
- 3-5x RPG-7V
- 24-36x grenades
- Several U/IManpads
- Several SVDs
- More willing to conduct martyrdom ops
- Care little about limiting to only mil targets

- 150x pax
- 3-5 cells; can coordinate if needed
- 3-5x 82mm / 120mm mortars
- 100s grenades
- Several SVDs
- Several SA-18s
- 15-20x RPG-7V
- 1-2x 107mm rockets
- Can manufacture and emplace crude & sophisticated IED / VBIED
- 80-100x AK47
- 10-15x RPK/PKM

- 75x pax; can mass if needed
- 15-20 DA cells
- 3-4x 82mm mortars
- 100s grenades
- Several SVDs
- 60-70x AK47
- 10-15x RPG-7V
- 5-10x RPK/PKM
- Can manufacture and emplace crude & sophisticated IED / VBIED

AIF Logistics

- Segment of local Sunni Arabs continue to support ACF along with extremist Shiites supporting AMM
- Caches inside and outside town that support terrorism throughout the JOA
- ACF able to contract insurgent and terrorist attacks to criminal groups in the ECR District –approx 50% of AIF attacks

For EC08 Exercise Use Only

El Central

Village Key Personalities

Targeting (Lethal Targets)

- Due to population and closeness of buildings – collateral damage potential very high.
- Power substation supports town and hospital that has few emergency backup generators

CMO (Non-Lethal Targets)

- Commerce
 - Irrigation project to create jobs and support agriculture
 - Establish a bank within the village
- Medical
 - Provide medical supplies and equipment to local clinic
 - Establish organized fire and paramedic service
- Police: Augment and equip police to reduce the threat to locals
- Education: Provide supplies and equipment to elementary schools
- Water: Begin well project in town to reduce health risks and reduce dependency on tanker deliveries from Ridgecrest

Significant Village Information

- Largest Presence of ACF forces and activity but few direct attacks in immediate area
- Black market exists but is not directly linked to ACF in the area
- Little support for MNF
- Shiite Arab population more tolerant and supportive of MNF
- Fertilizer plant – possible ACF supply for TIC / TIM (needs to be secured)

Order of Battle

- **GOB**
 - Kali Insurgency assesses to be < 10-15 percent (800-1200) of the local population of approx 8k
 - Main elements are foreign fighters transiting border
 - Crude but very effective weapon making capabilities
 - Unwilling to attack large forces directly but will make attacks of opportunity
 - They are very effective at using the terrain to their advantage
- **AOB**
 - None
- **MOB**
 - None
 - Man portable systems (Man Pads) theoretically could be smuggled at a future point in time

Order of Battle

CONT'D

- EOB
 - Kali insurgents are not known to use
 - Sophisticated radio technologies
 - encryption schemes
 - Electronic surveillance
 - Electronic jamming

- Border Nation - Redland
 - Large expanses of land very difficult to patrol
 - Considered Neutral but....
 - Will not allow any use of their airspace on the border
 - Forces can not cross into border nations and should maintain safe distance (greater than 1 NM)
 - US or Coalition Forces apprehended in border nation may have to remain there the duration of conflict.

MAIN ANTI-COALITION FACTIONS (ACF)

Cells that operate throughout Region

- **Islamic Resistance Movement** – IRM – (supported by but not controlled by Al Qaeda)
AKA Green Star Terrorist Cell (Arabic: حركة المقاومة الإسلامية)
Operates outside of the CSOTF area but influences activities and attacks throughout region to include North & Echo Ranges.
 - Seeks the total destruction of western societies and adoption of Islamic rule over all.
- **Scorpions** - Criminal organization willing to use violent means for financial gains to
 - The Scorpions operate in border areas supporting smuggling of personnel, weapon transshipment, and other illegal contraband. Extortion of village habitants to support their operations is common in weaker less controlled areas.
 - The Scorpions will engage anyone disrupting activities and are responsible for a significant portion of assassinations in border town areas

MAIN ANTI-COALITION FACTIONS (ACF)

- **East Militia Group (EMG)** Operates in Echo Range. **AKA Yellow Crescent terrorist Group** – is a militia force created by the China Lake Shiite cleric Muqtada Ali in June of 2006. The Islamist militia rose to international prominence on September 12th, 2006 when it spearheaded the first major armed confrontation against the U.S-led occupation forces in Kalochistan from the Shiite community in an uprising that followed the banning of al-Ali's newspaper and attempts to arrest him, and lasted until September 27th. **Considered as one of the most dangerous terrorist organizations in China Lake, and even more dangerous than Al-Qaeda.**
- **North Militia Group (NMG)** is composed of China Lake militants belonging to the Jihadist Salafi branch of Sunni Islam, who advocate a return to the pure Islam of the time of the Prophet Mohammed and oppose any foreign non-Muslim influence.

High Value Targets

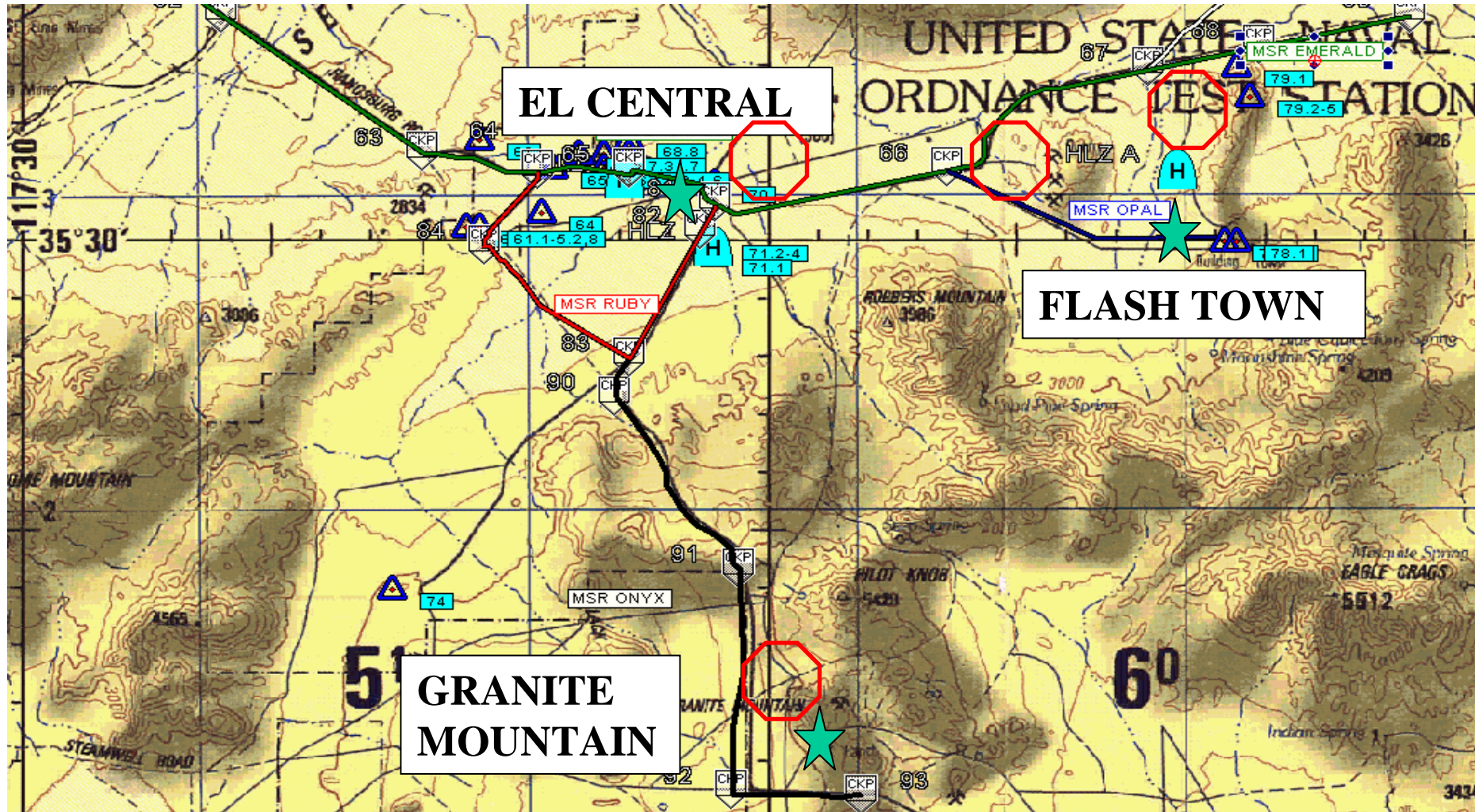
- **Abdul Al Bad** – Leader of the Islamic Resistance Movement (IRM) / Green Star Terrorist cell. Operates outside of CSOTF area but influences activities and attacks throughout region in North and East Ranges. Green star group - seeks the total destruction of western societies and adoption of Islamic rule over all.
- **Ibn Hidin** – “Harry” North Militia Group (NMG) / - primary group in North Range area and has been highly adversarial with national police force (NPF) and primary destabilizing force in region.
- **Muqtada Ali – Leader of East Militia Group (EMG) AKA Yellow Crescent Goup**. Established cease-fire has been broken by the group which is responsible for 100’s of recent coalition casualties.

Yellow crescent terrorist group - has violently and without regard to collateral damage / casualties attacked all who support coalition forces in the area.

High Value Targets CONT'D

- **Khalid Majer “Tommy Gun”** – Purported arms dealer that sells weapons to anyone with cash. Tommy gun known to have access to significant quantities of small arms and ammunition.
- **Abd al-hakiim “Butch Cassidy”** – Financier with unknown source of revenue. Butch has had significant contact with agents of the Gulf Shipping Company (GSC). The GSC is a legitimate front company transporting all types of goods and services such as food, heavy equipment, and oil transshipment. Unexplained profits and unusual business dealings suggest possible sympathetic dealings with known terrorist groups.

ECR SUSPECTED WEAPON CACHES

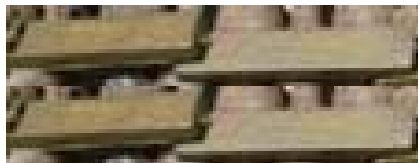


WEAPONS CACHE – Vicinity MSR Emerald

- Found within 100 meters of MSR Emerald (South of road)
- Very shallow hole – covered with light foliage and soil

- 6 x AK-47's
 - 2000 rnds
- 2 x RPG's
 - 20 rnds
- 2 x 152mm
- 5 lbs SEMTEX

SEMTEX



EXERCISE

EXERCISE

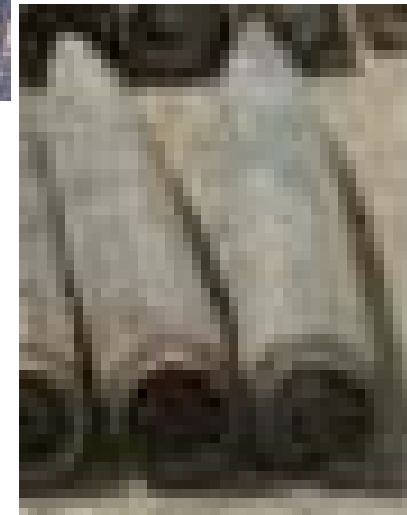
WEAPONS CACHE CONT'D



20 RNDs

ASSESSMENT: Insurgents
weapon caches found within 100m of
attack points

2 RPGs

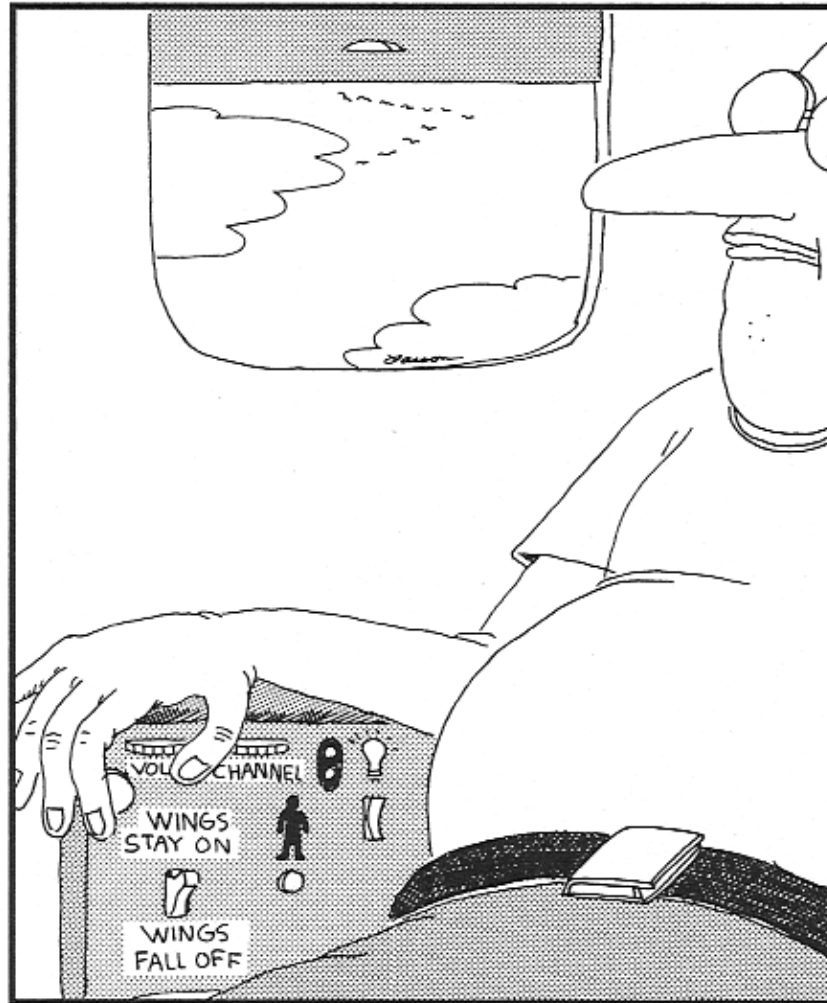


2 x 152 MM RNDs

Scenario Key Dates

- **20-21 May** SIGINT WG – Annapolis Junction MD – POC Jay Bobele & Eddie Gonzalez
- MSEL Scripting WS **13 June** – Norfolk Va. **Limited Seating 5 Seats left!**
- **7 July** Start-EX
- **11 July** Rock Drill
- **14 July** Ground Ops

Questions



Fumbling for his recline button,
Ted unwittingly instigates a disaster.